

Journal of the Portuguese Experimental Pathology Association

Editor: António M. Silvério Cabrita, MD, PhD, Coimbra, Portugal

Associated Editors: Daniel Cartucho, MSc, MD, Faro, Portugal
Rodrigo Farinha, MSc, DMD, Coimbra, Portugal

Senior Consultant: João A. B. Patrício, MD, PhD, Coimbra, Portugal
Manuel Luís Correia Matos Beja, MD, PhD, Coimbra, Portugal

Editorial Board:

Ana Calado Lopes, DVM, PhD, Coimbra, Portugal	Ivone Souza, PhD, Recife, Brasil
Andreia Figueiredo, DMD, PhD, Coimbra, Portugal	Jorge Colaço, DVM, PhD, Vila Real, Portugal
António Silvério Cabrita, MD, PhD, Coimbra, Portugal	Jorge Rodrigues, DVM, PhD, Vila Real, Portugal
Américo Afonso, DMD, PhD, Porto, Portugal	José A. S. Medeiros, MD, PhD, Coimbra, Portugal
Artur Varejão, DVM, PhD, Vila Real, Portugal	José Manuel Almeida, DVM, Vila Real, Portugal
Aura Colaço, DVM, PhD, Vila Real, Portugal	L. Boyanova, Sofia, Bulgária
Carlos A. Fontes Ribeiro, MD, PhD, Coimbra, Portugal	Luís Antunes, DVM, Vila Real, Portugal
Carlos Gonçalves, MD, PhD, Coimbra, Portugal	Luis de la Cruz Palomino, DVM, PhD, Lugo, Spain
Carlos Lopes, MD, PhD, Porto, Portugal	Margarida Caramona, PhD, Coimbra, Portugal
Carlos Viegas, DVM, PhD, Vila Real, Portugal	Maria de Lurdes Pinto, DVM, PhD, Vila Real, Portugal
Dora Catré, MD, PhD, Coimbra, Portugal	Maria dos Anjos Pires, DVM, Vila Real, Portugal
Fabício Valente, DVM, PhD, Minas Gerais, Brasil	Maria Helena Gil, PhD, Coimbra, Portugal
Fátima Gartner, DVM, PhD, Porto, Portugal	Maria João Pires, PhD, Vila Real, Portugal
Fátima Martins, MD, PhD, Coimbra, Portugal	Mário Ribeiro Júnior, PhD, Recife, Brasil
Felisbina Luisa Queiroga, PhD, Vila Real, Portugal	Maria Manuela Estima Gomes, PhD, Braga, Portugal
Fernanda Seixas Travassos, DVM, PhD, Vila Real, Portugal	Paula Oliveira, DVM, PhD, Vila Real, Portugal
Fernando Capela e Silva, PhD, Evora, Portugal	Paula Pereira, PhD, Lisbon, Portugal
Fidel San Roman, DVM, PhD, Madrid, Spain	Paula Rodrigues, DVM, PhD, Vila Real, Portugal
Francelina da Cruz Lopes, MD, PhD, Coimbra, Portugal	Rita Payan Carreira, PhD, Vila Real, Portugal
Gabriel Carvalho, DMV, PhD, Minas Gerais, Brasil	Rogério Branco, MD, PhD, Porto, Portugal
Graça Dias, DVM, PhD, Lisbon, Portugal	Rui M. B. Alves, MD, PhD, Coimbra, Portugal
Helena Fernandes, PhD, Porto, Portugal	Stefano Geuna, MD, Torino, Itália
Isabel Dias, DVM, PhD, Vila Real, Portugal	Vasco Bairos, PhD, Coimbra, Portugal
Isabel Poiars Baptista, DMD, PhD, Coimbra, Portugal	

Redactorial Board: Carlos Miguel Marto, DMD, Coimbra, Portugal
Eduardo Costa, MSc, Coimbra, Portugal
Gabriela Valadas, MD, Portimão, Portugal

José Ricardo Cabeças, MSc, Coimbra, Portugal
Karen Cavalcanti, MSc, Recife, Brasil

Technical Advisors: Ana Rute Duarte, DVM, MSc, Coimbra, Portugal
Gonçalo Cabrita, MSc, Coimbra, Portugal

Gonçalo Santos, MD, Coimbra, Portugal
Mahmoud Tavakoli, PhD, Coimbra, Portugal

Graphical Advisors: Cátia Gama, Aveiro, Portugal

Secretariat: Catarina Talina, BSc, Coimbra, Portugal
Felipe Pereira, MSc, Coimbra, Portugal

Miguel Costa, Std, Coimbra, Portugal

Experimental Pathology and Health Science
Clinics, Teaching, Research and Society

Two issues each year
ISSN 1646-8414
Legal deposit: 266156/07
Founded: 2007
2016: Volume 8 (2)
Language: English (UK)
Portuguese (PT, BR)

Correspondence:
António M Silvério Cabrita
Exinlab
Rua Guilherme Gomes Fernandes, 13 r/c
3000-209 Coimbra
Portugal
hsjournal@patolex.org

Experimental Pathology and **Health Sciences** Research, Clinics, Teaching and Society

STATEMENT OF PURPOSE

As the beginning of a new century, there is a need to promote scientific and technological development applicable to the entire community, only possible if research is primarily devoted to solving the basic problems and the financial gains are, instead of being the goal, only the means to sustain research. Scientific knowledge and technological capacity should be translated into practical applications for clinicians which in turn will be applicable to the population. New information and capacities can be transferred to teaching programs to prepare new health technicians.

Experimental Pathology and Health Sciences Journal belonging to the Portuguese Experimental Pathology Association means to be a forum to bring together scientists, clinicians and those who can voice health social problems. Our objective is to contribute to pluritranslational health work and in so doing provide better conditions for our citizens.

INSTRUCTIONS TO AUTHORS

Manuscript Categories

The journal comprises articles, organized under the following subjects:

Editorial, Memories, Invited Opinion, Invited Review, Review, Minireview, Reports, Student's Tribune, Technical Notes, How I do it, Research and Experimental Models, Clinical Cases, Clinics and Society, Teaching in Health Science Courses, Student and Research Matters, Applied Technology, Pathology for non-pathologists.

All submissions should be made using the email address hsjournal@patolex.org. All manuscripts are evaluated first by the Editor and Associated Editors and then submitted to a blinded peer-review process, where we preserve the confidentiality of the authors. After 60 days after the receiving date, the authors are informed about the result of the review: accepted, rejected or acceptable after some changes.

If there is any Conflict of Interest, the journal should be informed by the author on the submission of the manuscript. The Portuguese Association of Experimental Pathology holds copyright of published papers.

All correspondence concerning editorial matters should be addressed to:

António M Silvério Cabrita
Editor of Experimental Pathology and Health Sciences
Exinlab
Rua Guilherme Gomes Fernandes, 13 r/c
3000-209 Coimbra - Portugal
or by email to: hsjournal@patolex.org.

Manuscript Structure

Manuscripts should be prepared in the style of the Journal and according to the Uniform Requirements for Manuscripts Submitted to Biomedical Journals (Available at: <http://www.icmje.org>). Reviews should have a maximum of 8,000 words, 150 references, and six tables or figures.

First Page: Should contain an intelligible to the general reader abstract, with no more than 250 words. For research papers the abstract should clearly summarize the background, methodology, results and their significance.

Second Page: The second page must include a concise title; complete names of all authors; departments, institution and address where the research was performed; grant numbers and sources of support; name, address, e-mail and fax of the corresponding author. Any affiliations with any organization or entity having a direct financial or personal interest in the subject matter or materials discussed in the article should also be stated. The title page is the only page where the authors and their affiliations are identified. Please refer the number of text pages, tables and figures of the manuscript.

Body Text: Starts on the third page of the manuscript. For research papers the remaining sections of the text, should include: Introduction, Materials and Methods, Results,

Discussion, and Acknowledgments. Commonly abbreviated terms should be spelled out in their first occurrence and then may be referenced in abbreviation through the remainder of the manuscript. Authors must say if the appropriate boards or ethics committee approved the research protocol. If applicable authors should inform about the existence of informed permission of the patients.

Tables: Tables should be typed double-spaced and submitted on separate pages, as part of the manuscript. Tables should be black and white text only and should not include figures or other non-typeset images.

Figures: One figure consists on one or multiple related panels described under one legend. During the paper construction, figures will be sized to fit one or two columns. Figures without the appropriate size will be sized at the publisher's discretion. If the exact scale is critical, scale bars should be used on the photograph and specified in the legend. The legends are submitted as part of the manuscript, in the place where the related figure should appear in the paper. An adjustment of brightness, contrast, or color balance is only acceptable if applied to the whole image and does not change the conclusions taken from the picture. All pictures should be sent separately, in JPEG or TIFF format, with the best resolution possible.

References

References should be double-spaced and numbered in order of citation in the text, including citations in tables and figure legends. Complete author citation is required. References should conform to the style of the Journal, as follows (examples):

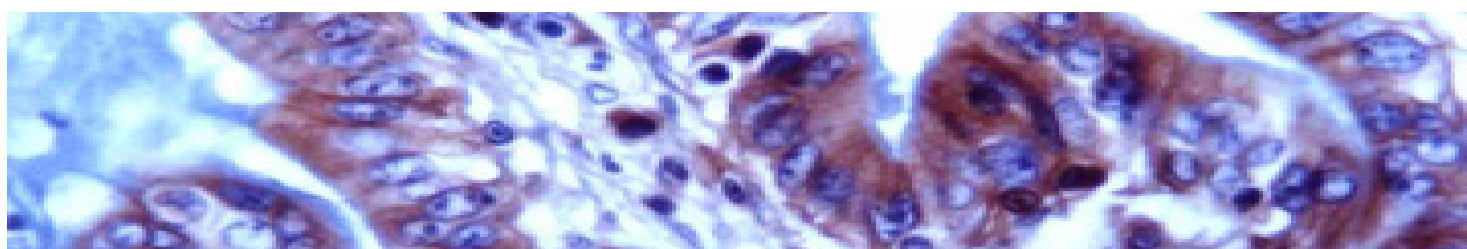
References of Journals: Pereira JE, Cabrita AM, Filipe VM, Bulas-Cruz J, Couto PA, Melo-Pinto P, Costa LM, Geuna S, Mauricio AC, Varejao AS. A comparison analysis of hindlimb kinematics during overground and treadmill locomotion in rats. *Behav Brain Res.* 2006;172; 212-218

References of Books: Ted A. Loomis, A. Wallace Hayes. *Numbers in Toxicology. Loomis's Essentials of Toxicology.* Edited by Academic Press. 1996; pp.17-30

References of Websites: Cited in text only. Include the name of the institution sponsoring the web site, URL address and date of access.

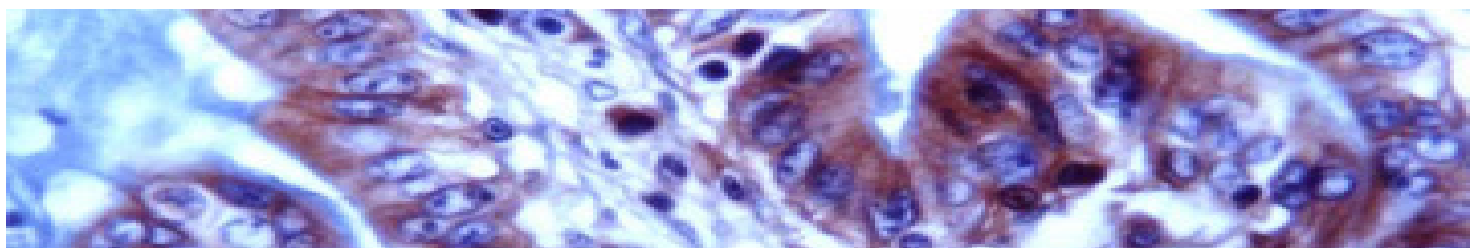
Authors will receive an electronic (PDF) reprint.

- 1 **Editorial Information**
- 7 **Editorial**
- 9 **Schistosomiasis *Mansoni* in Vitória de Santo Antão: Actions of coping program for neglected diseases - Sanar**
Braz, C.Y, Barros, D.M, Santos, V.N, Moura, D. F, Gomes, T. P.S, Oliveira, J.B
- 15 **Cytotoxic evaluation of 5-nitrothiophene-thiosemicarbazone derivative against HL-60**
Marques, K.M.R, Neto, L.N.A, Lima, S.M.A, Rodrigues, M.D, Silva, T.G, Mendonça, F.J.B
- 21 **Advantages of liquid based cytology upon conventional cytology: a systematic review**
Silva, G.G, Santos, D.L, Lima, M.I.A, Santiago, M.D.S, Silva, J.I, Peres, A.L
- 25 **Alveolar bone repair of rabbit incisors treated with sugarcane biopolymer: histomorphometric study**
Sousa-Filho, G.C, Camara-Neto, R.D, Cruz-Perez, D.E, Mello, L.A, Baratella-Evêncio, L
- 29 **The influence of *Genipa Americana* L. on the adipose tissue of mice**
Brigas, S, Costa, E, Cabrita, S
- 35 **Antimicrobial activity of plants used in manufacture of traditional phytotherapies in community centres of Recife metropolitan region**
Onofre, N.A, Magalhães, L.P.M, Amaral, J.P.D, Yara, R, Lima, C.S.A, Sena, K.X.F.R
- 41 **Cytotoxic and mutagenic potential assessment of *Croton heliotropiifolius* Kunth (Euphorbiaceae)**
Silva, J.A.G, Lima, M.I.A, Morais, M.C.S, Rodrigues, J.H, Silva, E.C, Leite, S.P
- 47 **Aspects morphological and morphometric liver and rats submitted spleen the diet protein a swine meat, shrimp and casein**
Silva, I.P.L, Ventura, R.F.V, Maia, C.S, Leite, K.M, Ribeiro, L.L, Filho, N.P.T
- 55 **Caregiver burden of oncological patients assisted by a ward for palliative care**
Arruda Filho, J.J, de Souza Neto, I. A, Silva, R.M.A, Ramalho, M.N.A, Souza Costa, B.G, Lima e Silva, T.C
- 59 **Individual space-time**
Cabrita, S, Farinha, R
- 67 **Liver damage protection with epigallocatechin-3-gallate use (green tea) in wistar rats submitted to westernized diet: comparative study with sibutramine**
Ribeiro, L.L, Souza, I.A, Silva, I.P.L, Menezes, T.M, Baratella-Evencio, L, Nascimento, E
- 41 **Cytotoxic activity of bioactive metabolites produced by *Streptomyces parvulus* UFPEDA-3408**
Silva-Lacerda, G.R, Silva, C.C, Santana, R.C.F, Araújo, J.M, Ximenes, R.M,



Lima, G.M.S

- 81 Quantitative antimicrobial evaluation of control and irradiated extracts of *Syzygium cumini* (L.) Skeels against isolated clinical strains of *Staphylococcus aureus***
Vicalvi-Costa, M.C.V, Costa Júnior, C.E.O, Magalhães, L.P.M, Oliveira, C.V.J, Sena, K.X.F.R, Colaço,W
- 85 Downregulation of INF- γ and IL-10 in mice submitted to neonatal malnutrition and exposed to infection by *S. mansoni***
Oliveira, D.C, Galvão, B.H.A, Cruz, C.S, Aires, A.L, Costa, V.M.A, Castro, C.M.M
- 93 Effects of vaginal cones in the treatment of female urinary incontinence: literature review**
Pontes, V.M.B, Moura, M.R.A, Machado, P.C.R, Rocha, A.P.S, Santos, F.A.G, Neves, R.P
- 99 Epidemiology of infection by *Helicobacter pylori* and efficiency of therapeutic conventional and herbal**
Melo, D.T, Ferreira, U.L, Cordeiro, B.M.P.C
- 105 Evaluation of the cytotoxicity of fraction rich in phenolic compounds of leaves and branches of *Turnera diffusa* var. *diffusa***
Ramos, B.A, Rocha, T.A, Silva, M.M, Melo, M.C.L.V, Santos, N.P, Correia M.T.S
- 111 Evaluation of the effects of intravenous hexanol nitrate administration, na organic nitrate, on autonomic balance in normotensive rats**
Freitas, J.A.M, Alves, N.F.B, França-Silva, M.S, Braga, V.A
- 115 Detection and association of resistant bacteria on surfaces and blood culture of an intensive care unit**
Ferreira, C.J.S, Almeida, K.R, Silva, N.S, Rocha, I.V, Xavier, D.E, Oliveira, S.R
- 119 Ground Substance Study in Controlled Pressure Situations**
Vasconcelos, D, Costa, E, Cabrita S
- 125 Histopathological and histomorphometric analysis of in vivo anti-inflammatory activity of *Piptadenia gonoacantha* (Fabaceae)**
Anjos, I.N, Amaro, M.O, Valente, F.L, Carvalho, G.D, Rosa, M.B, Carvalho, C.A
- 131 Histopathological analysis of crypt changes in inflammatory bowel disease**
Fernandes da Silva, A.P, Nascimento, G.A.F, Mello, L.A, Souto Maior, M.R.M, Paz, S.T, Melo-Júnior, M.R
- 135 Identification of microorganisms isolated of soil of region in Serra Talhada/ PE – Brazil aimed at enzymes collagenolytic production**
Oliveira, L.F, Costa, I.L.F, Feitosa, J.V.A.M, Albuquerque, G.M.R, Souza-Mota, M.C, Duarte, C.A.L, Marques, D.A.V
- 141 Infection by *Raoultella ornithinolytica*: pathogenesis and clinical aspects.**
Silva, C.J, Araújo, B.L, Leite, I.D.S, Teixeira de Jesus, O.M.S, Fernandes, Y.R, Tenório, P.P
- 143 Pyocyanin-induced reduction of pro-inflammatory mediators in peritoneal**



macrophages

Sales-Neto, J.M, Lima, É.A, Cavalcante-Silva, L.H.A, Vasconcelos, U, Rodrigues-Mascarenhas, S

- 159 Modulating effect of phytotherapics on the activity of antibiotics of clinical use**
Magalhães, L.P.M, Silva, R.F.B, Onofre, N.A, Yara, R, Andrade Lima, C.S, Sena, K.X.F.R
- 167 Neuroanatomy of fear: an update on literature**
Ribeiro, F. S, Oliveira, B. S, Santos, I. F, Silva Junior, E. X
- 171 New technologies applied to the teaching of pathology**
Silva, R. B. C, Lucena, F. K, Estrela, Y. C. A, Rezende, A. C. C
- 171 Persistent infection by pseudomonas and multiresistance to antibiotics diagnosed in a kidney transplanted patient: case report**
Germinio, J.E.S, Ferreira, M.P.F, Silva, A.J.M, Oliveira, S. R
- 171 Magnetic nanoparticles coated with polyaniline to β -galactosidase immobilization and lactulose production**
Lima, L. R. A, Araújo, M. I. F, Lima, M. A. M, Silvério, S. I, Júnior, L. B. C, Teixeira, J. A

